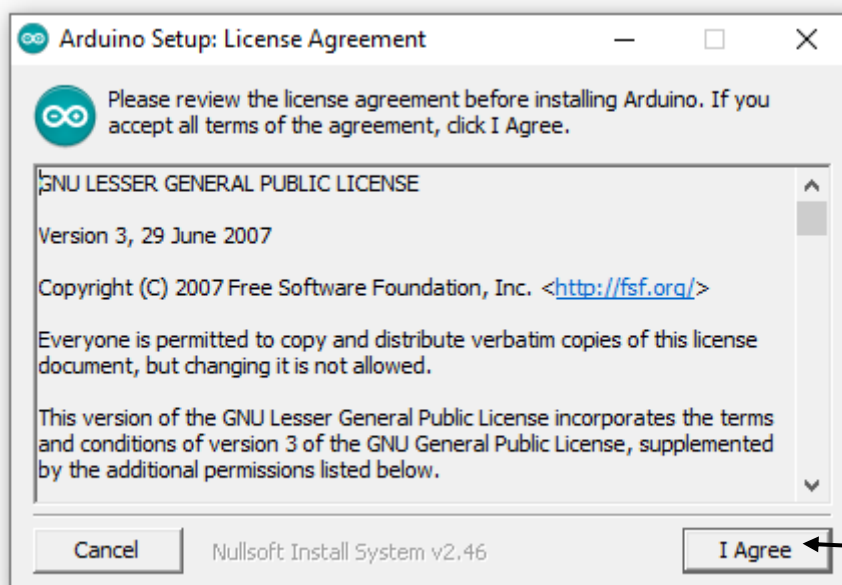
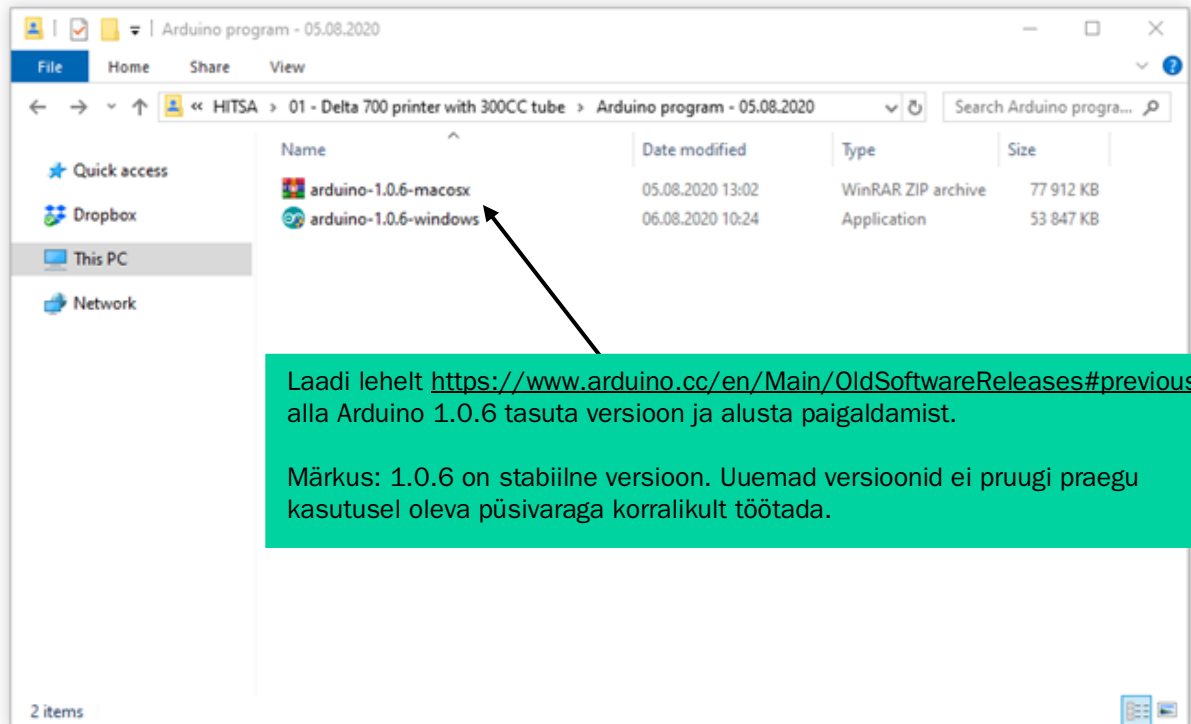


**Delta 700 3D-printeri kasutusjuhend  
Arduino IDE ja Marlini püsivara jaoks**

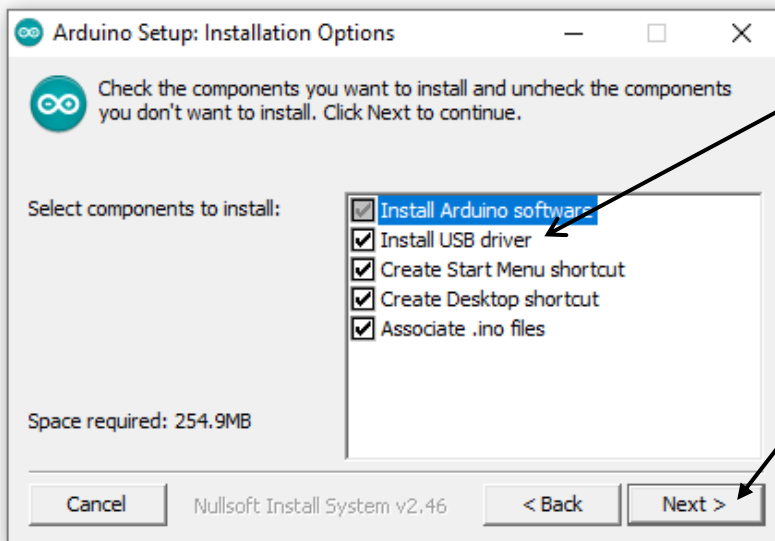
## Dokumendis käsitletav:

1. Arduino Integrated Development Environmenti (IDE) paigaldamine ja häälestamine **300 ml tuubiga Delta 700 viskoosse materjali 3D-printeri jaoks.**
2. **Delta 700 viskoosse materjali 3D-printeri** kontrolleri püsivara paigaldamine ja uuendamine.

# 1. Arduino Integrated Development Environmenti (IDE) paigaldamine ja häälestamine 300 ml tuubiga Delta 700 viskoosse materjali 3D-printeri jaoks

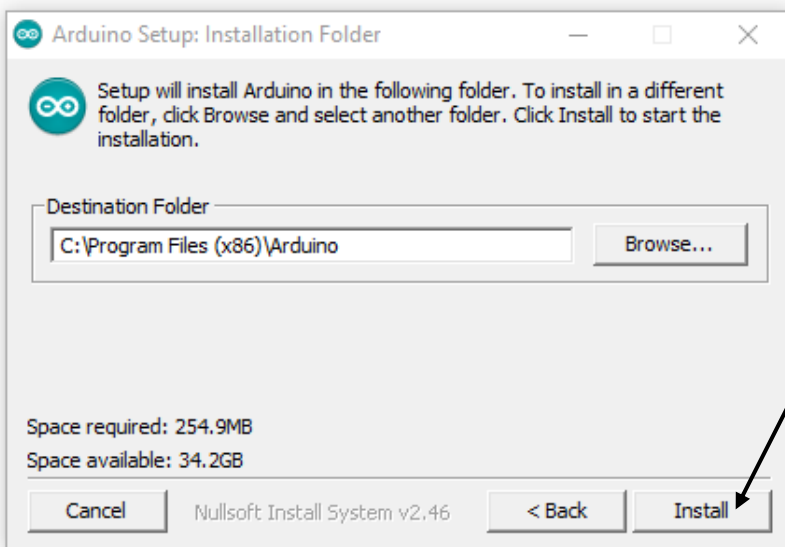


Nõustu

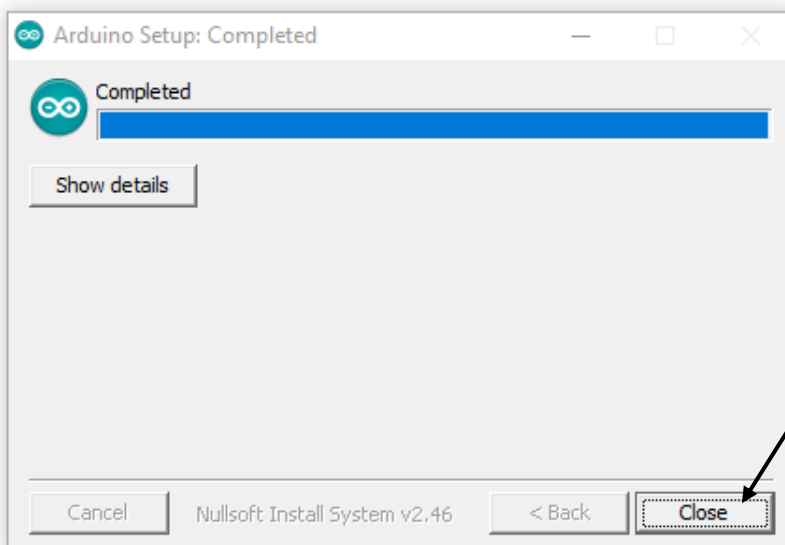


Printeri arvutiga ühildumiseks on vaja Arduino USB-draiverit.

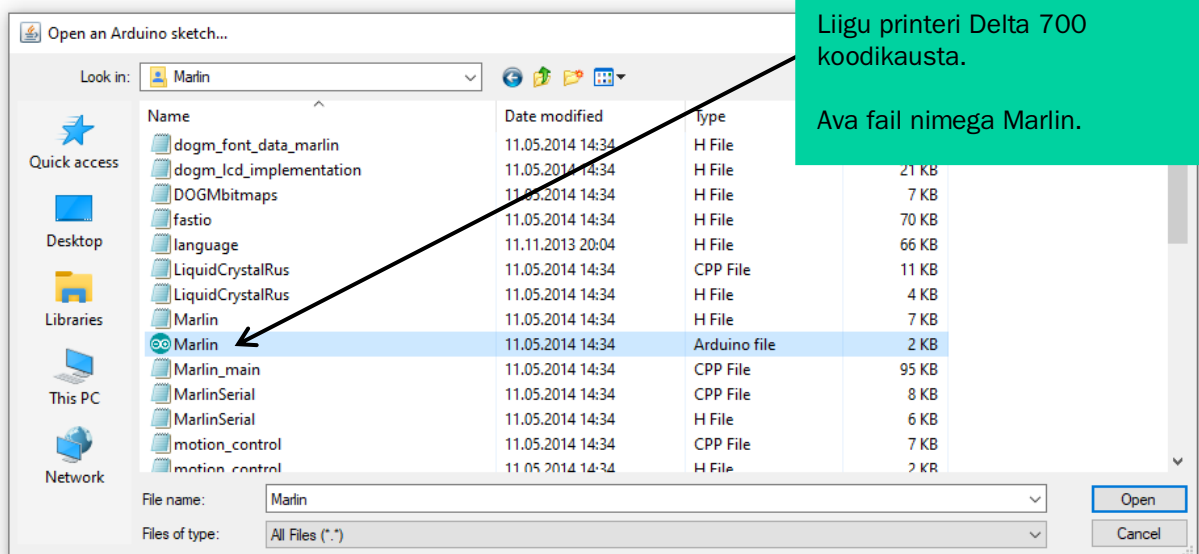
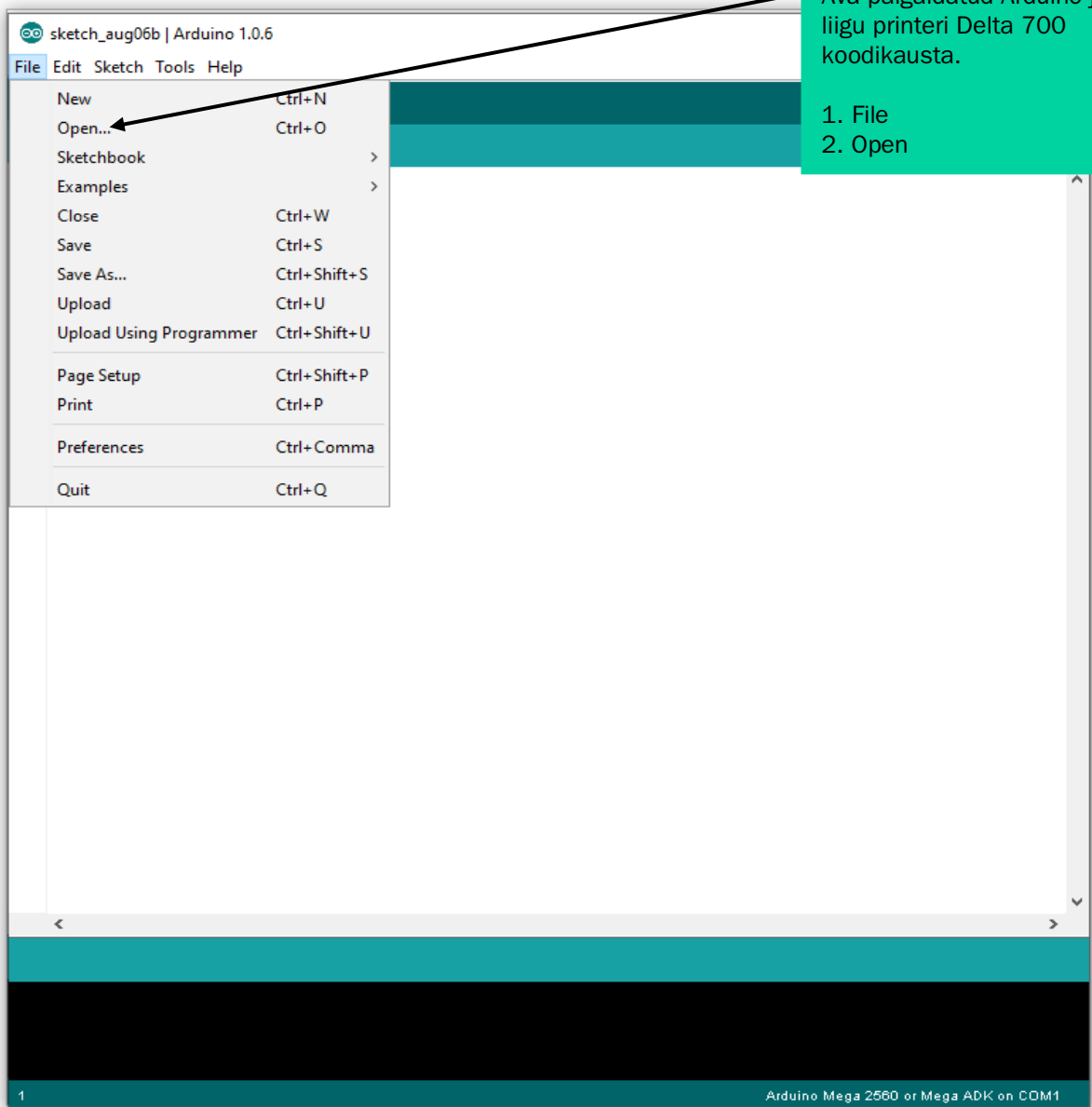
Liigu edasi

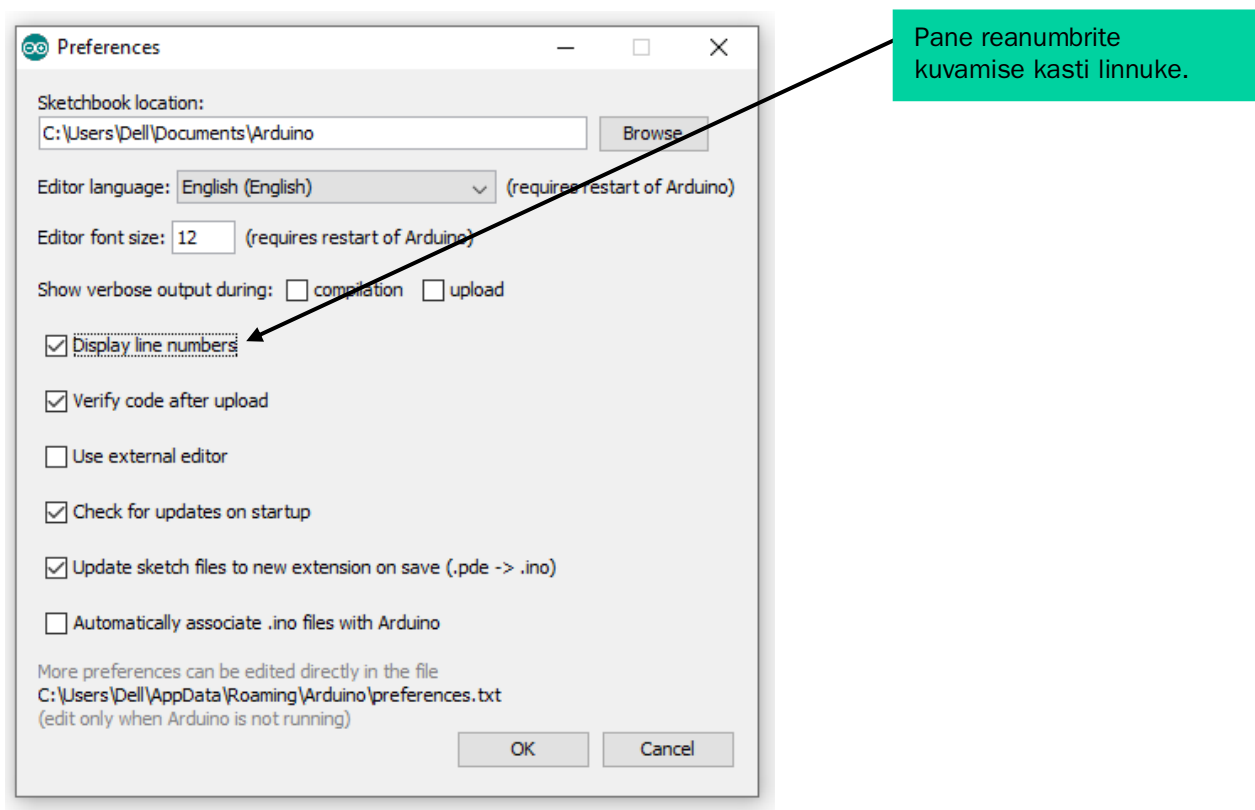
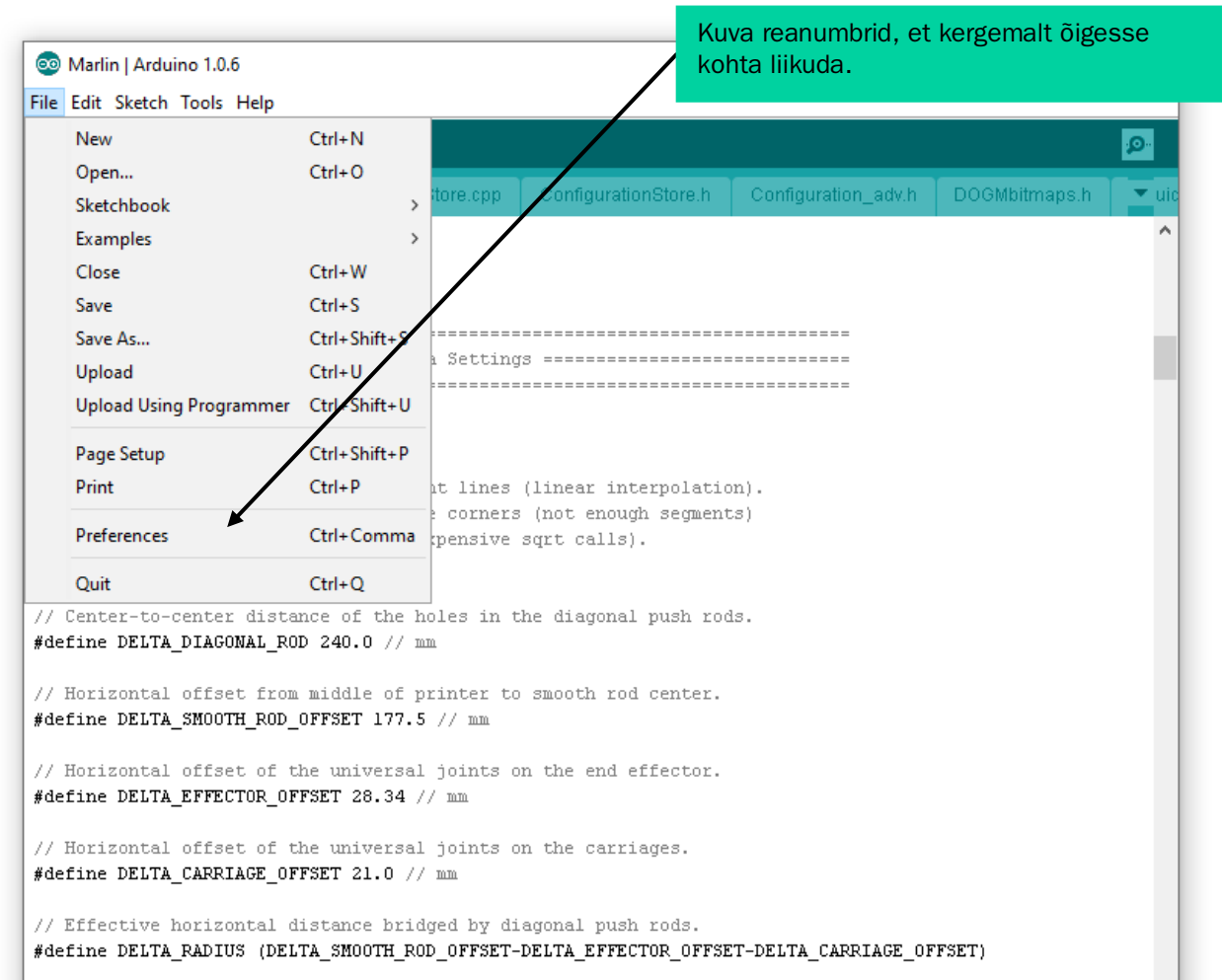


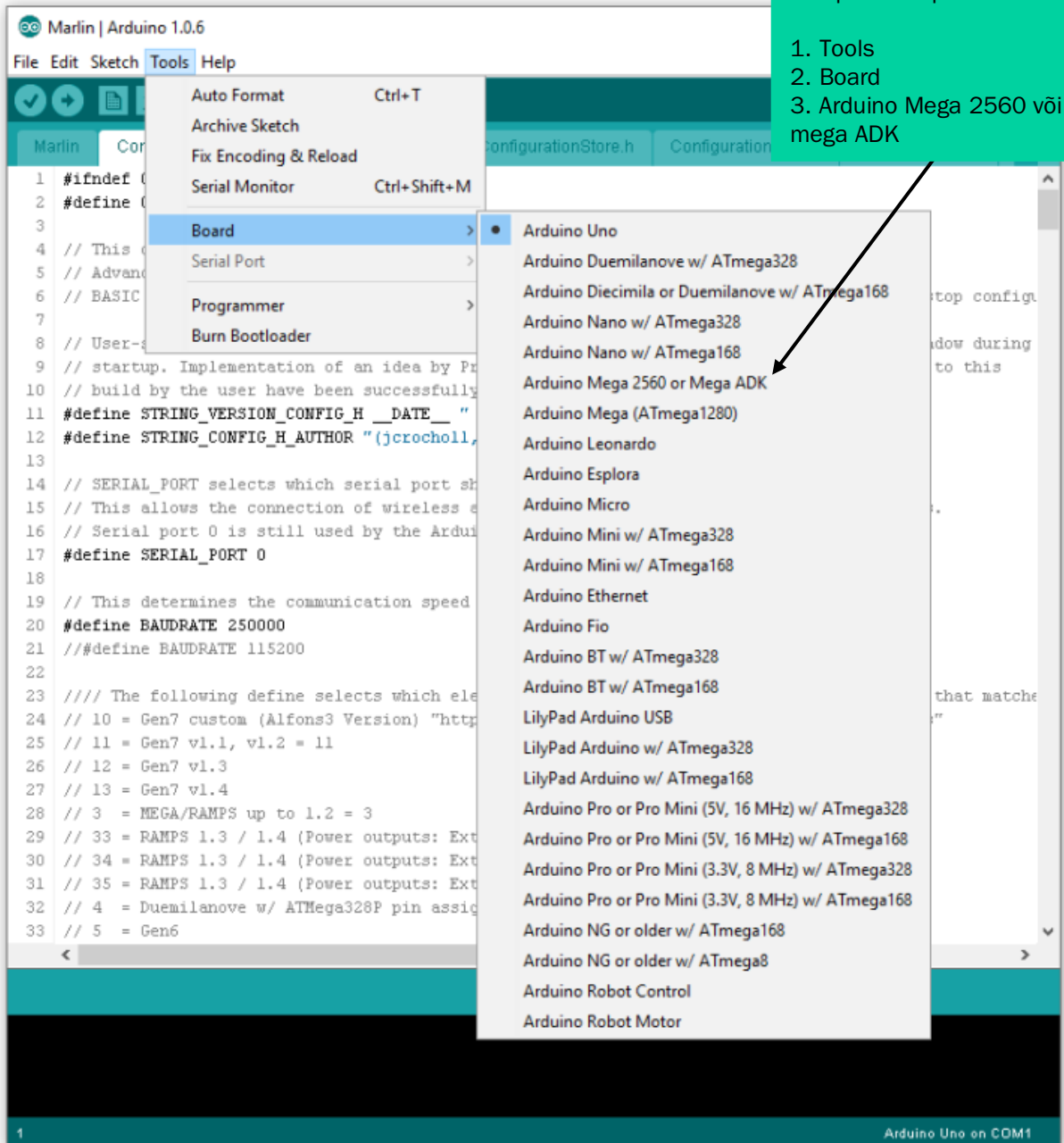
Paigalda

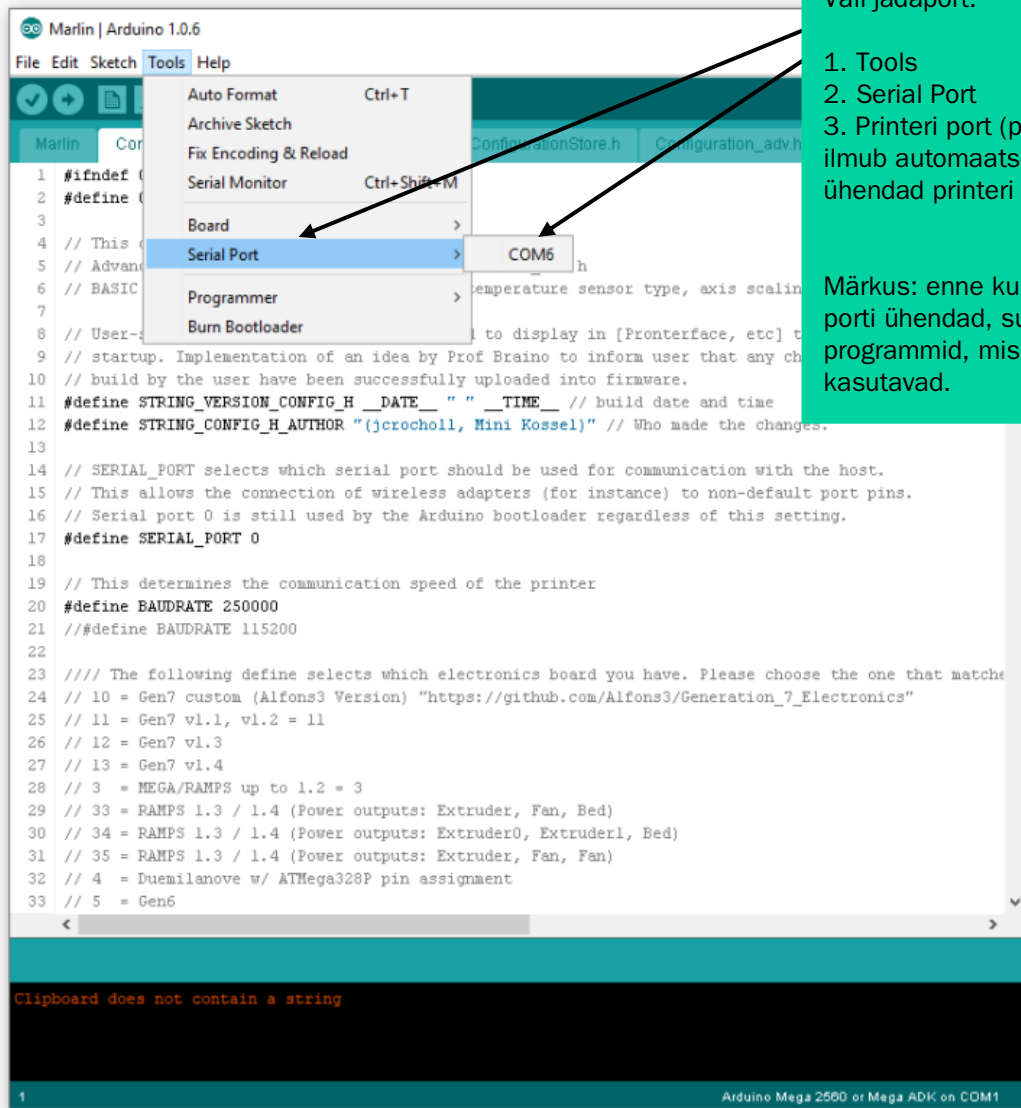


Sulge









Vali jadaport.

1. Tools
2. Serial Port
3. Printeri port (pordinumber ilmub automaatselt, kui ühendad printeri USB-porti).

Märkus: enne kui printeri USB-porti ühendad, sulge teised programmid, mis printerit kasutavad.

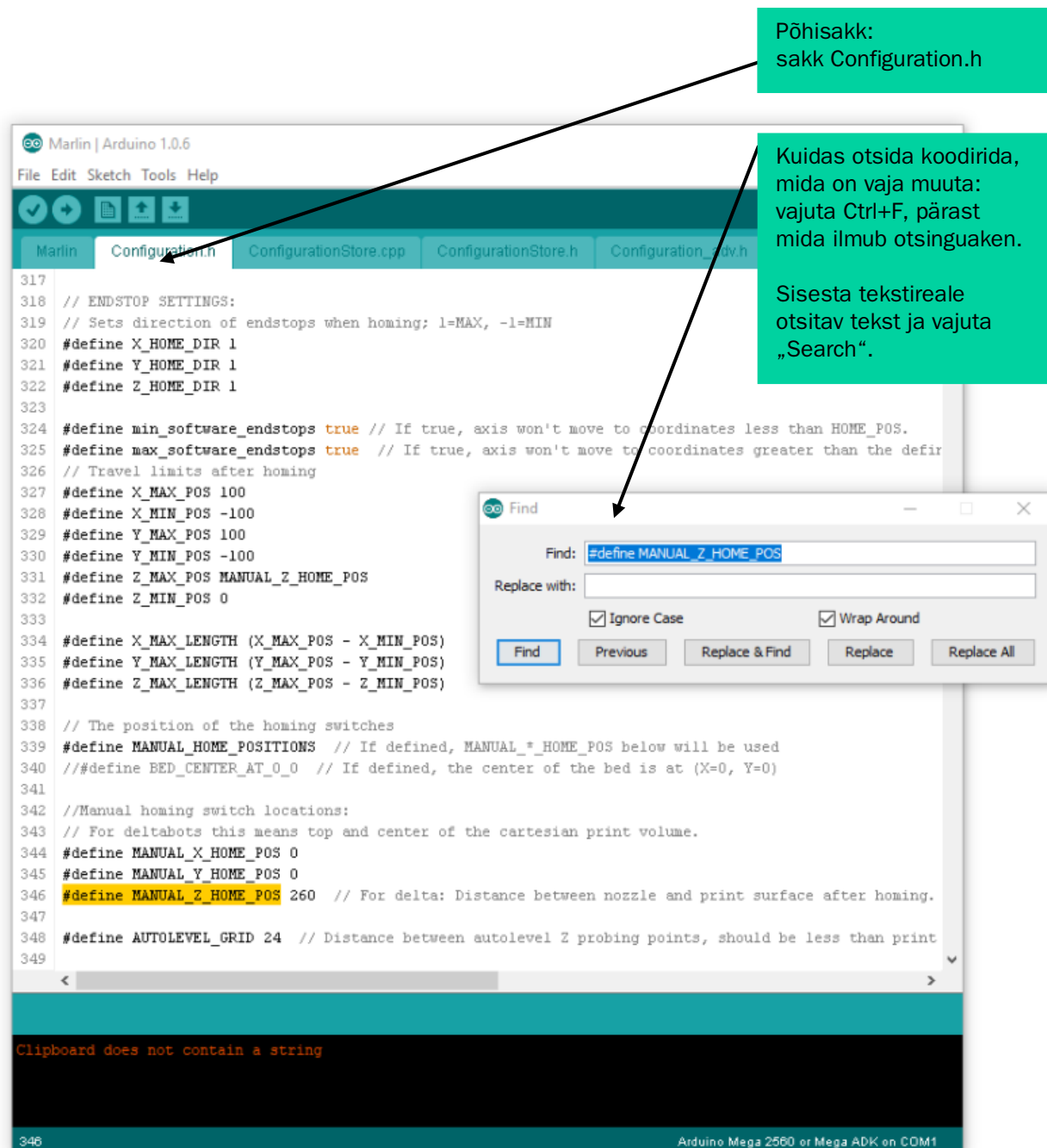


## 2. Viskooset materjali printiva Delta 700 3D-printeri kontrolleri püsivara häälestamine ja uuendamine

Põhisakk:  
sakk Configuration.h

Kuidas otsida koodirida, mida on vaja muuta:  
vajuta Ctrl+F, pärast mida ilmub otsinguaken.

Sisesta tekstireale otsitav tekst ja vajuta „Search“.



The image shows a screenshot of the Arduino IDE interface. The main window displays the Configuration.h file with the following code:

```
317
318 // ENDSTOP SETTINGS:
319 // Sets direction of endstops when homing; 1=MAX, -1=MIN
320 #define X_HOME_DIR 1
321 #define Y_HOME_DIR 1
322 #define Z_HOME_DIR 1
323
324 #define min_software_endstops true // If true, axis won't move to coordinates less than HOME_POS.
325 #define max_software_endstops true // If true, axis won't move to coordinates greater than the defin
326 // Travel limits after homing
327 #define X_MAX_POS 100
328 #define X_MIN_POS -100
329 #define Y_MAX_POS 100
330 #define Y_MIN_POS -100
331 #define Z_MAX_POS MANUAL_Z_HOME_POS
332 #define Z_MIN_POS 0
333
334 #define X_MAX_LENGTH (X_MAX_POS - X_MIN_POS)
335 #define Y_MAX_LENGTH (Y_MAX_POS - Y_MIN_POS)
336 #define Z_MAX_LENGTH (Z_MAX_POS - Z_MIN_POS)
337
338 // The position of the homing switches
339 #define MANUAL_HOME_POSITIONS // If defined, MANUAL*_HOME_POS below will be used
340 //#define BED_CENTER_AT_0_0 // If defined, the center of the bed is at (X=0, Y=0)
341
342 //Manual homing switch locations:
343 // For deltabots this means top and center of the cartesian print volume.
344 #define MANUAL_X_HOME_POS 0
345 #define MANUAL_Y_HOME_POS 0
346 #define MANUAL_Z_HOME_POS 260 // For delta: Distance between nozzle and print surface after homing.
347
348 #define AUTOLEVEL_GRID 24 // Distance between autolevel Z probing points, should be less than print
349
```

A Find dialog box is open over the code, with the search text "#define MANUAL\_Z\_HOME\_POS" entered in the "Find:" field. The "Replace with:" field is empty. The "Ignore Case" and "Wrap Around" checkboxes are checked. The "Find" button is highlighted.

Clipboard does not contain a string

348 Arduino Mega 2560 or Mega ADK on COM1

## Delta 700 Marlini seeded sakist Configuration.h:

20	#define BAUDRATE 250000
58	#define MOTHERBOARD 33
78	#define DELTA
86	#define DELTA_DIAGONAL_ROD 240.0
89	#define DELTA_SMOOTH_ROD_OFFSET 177.5
92	#define DELTA_EFFECTOR_OFFSET 28.34
95	#define DELTA_CARRIAGE_OFFSET 21.0
98	#define DELTA_RADIUS (DELTA_SMOOTH_ROD_OFFSET-DELTA_EFFECTOR_OFFSET-DELTA_CARRIAGE_OFFSET)
285	const bool X_MIN_ENDSTOP_INVERTING = false;
286	const bool Y_MIN_ENDSTOP_INVERTING = false;
287	const bool Z_MIN_ENDSTOP_INVERTING = false;
288	const bool X_MAX_ENDSTOP_INVERTING = false;
289	const bool Y_MAX_ENDSTOP_INVERTING = false;
290	const bool Z_MAX_ENDSTOP_INVERTING = false;
311	#define INVERT_X_DIR false
312	#define INVERT_Y_DIR false
313	#define INVERT_Z_DIR false
314	#define INVERT_E0_DIR false
315	#define INVERT_E1_DIR false
316	#define INVERT_E2_DIR false
346	#define MANUAL_Z_HOME_POS 260 // For delta: Distance between nozzle and print surface after homing.
352	#define HOMING_FEEDRATE {150*30, 150*30, 150*30, 0}
358	#define DEFAULT_AXIS_STEPS_PER_UNIT {80, 80, 80, 60} // X , Y, Z, E
359	#define DEFAULT_MAX_FEEDRATE {900, 900, 900, 900} // (mm/sec)
360	#define DEFAULT_MAX_ACCELERATION {9000,9000,9000,9000} // X, Y, Z, E maximum start speed for accelerated moves.

## Delta 700 Marlini seeded sakist Configuration\_adv.h:

213	#define DEFAULT_STEPPER_DEACTIVE_TIME 600 // ms
-----	---

## Püsivara koodi printerisse laadimine

Salvesta

Koodi üles laadimine

Märkus

- Enne üles laadimist sulge teised printeriprogrammid.
- Kui kood on üles laaditud, ilmub alla vasakusse nurka selle kohta märg.

```
Marlin | Arduino 1.0.6
File Edit Sketch Tools Help
Marlin Configuration.h ConfigurationStore.cpp ConfigurationStore.h Configuration...

#define POWER_SUPPLY 1

//=====
//----- Delta Settings -----
//=====
// Enable DELTA kinematics
#define DELTA

// Make delta curves from many straight lines (linear interpolation).
// This is a trade-off between visible corners (not enough segments)
// and processor overload (too many expensive sqrt calls).
#define DELTA_SEGMENTS_PER_SECOND 100

// Center-to-center distance of the holes in the diagonal push rods.
#define DELTA_DIAGONAL_ROD 240.0 // mm

// Horizontal offset from middle of printer to smooth rod center.
#define DELTA_SMOOTH_ROD_OFFSET 177.5 // mm

// Horizontal offset of the universal joints on the end effector.
#define DELTA_EFFECTOR_OFFSET 28.34 // mm

// Horizontal offset of the universal joints on the carriages.
#define DELTA_CARRIAGE_OFFSET 21.0 // mm

// Effective horizontal distance bridged by diagonal push rods.
#define DELTA_RADIUS (DELTA_SMOOTH_ROD_OFFSET-DELTA_EFFECTOR_OFFSET-DELTA_CARRIAGE_OFFSET)

// Effective X/Y positions of the three vertical towers.
#define SIN_60 0.8660254037844386
#define COS_60 0.5

1 Arduino Uno on COM1
```

## Printeri kontrollkoodid (allikas: marlinfw.org):

G0-G1: Linear Move	M82: E Absolute	M290: Babystep
G2-G3: Controlled Arc Move	M83: E Relative	M300: Play Tone
G4: Dwell	M85: Inactivity Shutdown	M301: Set Hotend PID
G5: Bézier cubic spline	M92: Set Axis Steps-per-unit	<b>M302: Cold Extrude</b>
G10: Retract	M100: Free Memory	M303: PID autotune
G11: Recover	M104: Set Hotend Temperature	M304: Set Bed PID
G12: Clean the Nozzle	<b>M105: Report Temperatures</b>	M350: Set micro-stepping
G20: Inch Units	M106: Set Fan Speed	M351: Set Microstep Pins
G21: Millimeter Units	M107: Fan Off	M355: Case Light Control
G26: Mesh Validation Pattern	M108: Break and Continue	M360: SCARA Theta A
G27: Park the nozzle	M109: Wait for Hotend Temperature	M361: SCARA Theta-B
G28: Auto Home	M110: Set Line Number	M362: SCARA Psi-A
G29: Mesh Bed Leveling	M111: Debug Level	M363: SCARA Psi-B
G29: Automatic Bed Leveling	<b>M112: Emergency Stop</b>	M364: SCARA Psi-C
G29: Unified Bed Leveling	M113: Host Keepalive	M380: Activate Solenoid
G30: Single Z-Probe	M114: Get Current Position	M381: Deactivate Solenoids
G31: Dock Sled	M115: Firmware Info	M400: Finish Moves
G32: Undock Sled	M117: Set LCD Message	M401: Deploy Probe
G33: Delta Auto Calibration	M118: Serial print	M402: Stow Probe
G38.2-G38.3: Probe target	<b>M119: Endstop States</b>	M404: Set Filament Diameter
G42: Move to mesh coordinate	<b>M120: Enable Endstops</b>	M405: Filament Width Sensor On
G90: Absolute Positioning	<b>M121: Disable Endstops</b>	M406: Filament Width Sensor Off
G91: Relative Positioning	M122: TMC Debugging	M407: Filament Width
G92: Set Position	M125: Park Head	M410: Quickstop
M0-M1: Unconditional stop	M126: Baricuda 1 Open	M420: Bed Leveling State
M3: Spindle CW / Laser On	M127: Baricuda 1 Close	M421: Set Mesh Value
M4: Spindle CCW / Laser On	M128: Baricuda 2 Open	M428: Home Offsets Here
M5: Spindle / Laser Off	M129: Baricuda 2 Close	<b>M500: Save Settings</b>
M17: Enable Steppers	<b>M140: Set Bed Temperature</b>	<b>M501: Restore Settings</b>
M18-M84: Disable steppers	M145: Set Material Preset	<b>M502: Factory Reset</b>
M20: List SD Card	<b>M149: Set Temperature Units</b>	<b>M503: Report Settings</b>
M21: Init SD card	M150: Set RGB(W) Color	M504: Validate EEPROM contents
M22: Release SD card	<b>M155: Temperature Auto-Report</b>	M540: Endstops Abort SD
M23: Select SD file	M163: Set Mix Factor	M600: Filament Change
M24: Start or Resume SD print	M164: Save Mix	M603: Configure Filament Change
M25: Pause SD print	M165: Set Mix	M605: Dual Nozzle Mode
M26: Set SD position	M190: Wait for Bed Temperature	M665: Delta Configuration
M27: Report SD print status	M200: Set Filament Diameter	M665: SCARA Configuration
M28: Start SD write	M201: Set Print Max Acceleration	M666: Set Delta endstop adjustments
M29: Stop SD write	M203: Set Max Feedrate	M666: Set dual endstop offsets
M30: Delete SD file	M204: Set Starting Acceleration	M851: Z Probe Offset
M31: Print time	M205: Set Advanced Settings	M852: Bed Skew Compensation
M32: Select and Start	M206: Set Home Offsets	M900: Linear Advance Factor
M33: Get Long Path	M207: Set Firmware Retraction	M906: TMC Motor Current
M34: SDCard Sorting	M208: Set Firmware Recovery	M907: Set Motor Current
M42: Set Pin State	M209: Set Auto Retract	M908: Set Trimptot Pins
M43: Debug Pins	<b>M211: Software Endstops</b>	M909: DAC Print Values
M43 T: Toggle Details (Debug Pins)	M218: Set Hotend Offset	M910: Commit DAC to EEPROM
M48: Probe Accuracy Test	<b>M220: Set Feedrate Percentage</b>	M911: TMC OT Pre-Warn Condition
M73: Set Print Progress	<b>M221: Set Flow Percentage</b>	M912: Clear TMC OT Pre-Warn
M75: Start Print Job	M226: Wait for Pin State	M913: Set Hybrid Threshold Speed
M76: Pause Print Job	M240: Trigger Camera	M914: TMC Bump Sensitivity
M77: Stop Print Job	M250: LCD Contrast	M915: TMC Z axis calibration
M78: Print Job Stats	M260: I2C Send	M928: Start SD Logging
M80: Power On	M261: I2C Request	M999: STOP Restart
M81: Power Off	M280: Servo Position	



Valminud Hariduse Infotehnoloogia Sihtasutuse IT Akadeemia programmi toel.



Õppematerjalile kohaldatakse järgmist Creative Commonsi Eesti litsentsi (versioon 4.0):  
*autorile viitamine, mitteäriline eesmärk, jagamine samadel tingimustel*  
<http://creativecommons.org/licenses/by-nc-sa/4.0/>



Koostanud **Madis Kaasik ja Lauri Kilusk, Eesti Kunstiakadeemia**, jaanuar 2021